

View from the Hill

Thorpe on the Hill News

Issue No 143 - December 23/January 24



The Newsletter is sponsored for you by Thorpe on the Hill Parish Council

The next edition will be at the beginning of December and any contributions are welcome. Cut off date for **submissions will be Friday 19th January**. Anyone who would like to contribute to the magazine please do so through viewfromthehillpub@gmail.com or, if you wish to place an advert, then email Chris.abrahams@btinternet.co.uk .

From the Editor

Hi Everybody

Welcome to our Christmas Issue. From the recently taken photo by Tony Magri it would be hard to believe that we are in November!!!

As usual the December edition of View from the Hill wishes everyone an early Happy Christmas and New Year!!!

In November the village commemorated Memorial Day, both the Cubs and Scouts, the young people from the school as well as the adults.

The wreathes laid by the school were I thought very beautiful.....



On behalf of the village I would also like to say a big thankyou to John Burden, the current Oliver Roper caretaker for his fantastic job of restoring the bench in memory of Derek Brindley under the tree outside the Oliver Roper Centre. He here is with Chrissy, Derek's wife.

As usual a lovely morning the first Friday in November, thanks to Umbrellas with their wonderful cooks. Next coffee morning is December 1st from 9.30. Everyone welcome to come along.



Happy Christmas to everyone and a Happy New Year!!!!

Sylvia

viewfromthehillpub@gmail.com



Stillness



All is calm, all is bright the carol goes. Chinese five element philosophy has much to say about winter; it gives rest, peace and calm to the cycle of life. We need growth as well as this quiet time to balance life. This viewpoint says that winter is a time to take in and allow the activity of the year to grow and develop by allowing it to penetrate our depths; draw deeper inside and contemplate the mysteries of life as we guard our reserves and keep warm and well-nourished in the shorter days.

You may have seen the recent article about the benefits of Tai Chi; the village group has now been running for a year. This is an amazing milestone. The research suggests that after 12 weeks of practising these gentle mindful movements there are measurable gains in muscle strength and balance. Impact on mood, sleep and wellbeing can be noted too.

One thing I love about taichiqigong is that it is infinitely adaptable to the folk who are learning it. The group in the care home where I run a class have their very own set of movements which can be done seated and reflect the birds they can see outside their windows. Visitors and staff join in too and despite the activity going on around us, for an hour, we are in our own oasis of peace and birdsong!

Self-care Saturday “Finding Stillness” takes place on December 2nd 10-12

We will be focusing on the back and how to rest and restore yourself day to day. If you are feeling ragged and exhausted this couple of hours is for you!!

Please bring a mat and blanket. All the movements can be done seated.

Weekly classes continue at the Oliver Roper on Monday mornings until December 4th and resume after Christmas on January 8th 2024

THIS
CHRISTMAS
HAVE YOU ANY
IDEA WHERE THE
FINEST FOOD WILL
BE EATEN & SOME
GLORIOUS CAROLS
WILL BE SUNG

IT'S ALL HAPPENING IN THE
OLIVER ROPER
FRI DEC 1ST 9-30² 1^{PM}
CURTESY

UMBRELLAS
CLIVE N DAVE

OH COME YE LOCALS COME
THANK YOU

Whisby Nature Reserve

Woodland Management

From September through to March we manage the woodlands on the Nature Reserve so you might see some things happening on your walks around. Managed woodlands are the best for wildlife as they provide more varieties of habitats for a wider variety of creatures and I'll explore a few things we might be doing.

Coppicing –



This is a traditional way of managing woodlands and has been practiced not only by our ancestors but also by the creatures that came before them, all be it by accident! Coppicing means to cut a tree to near ground level and let it regrow. When it regrows it will increase its number of stems leading to a denser, bushier tree in years to come and varying the age of that section of woodland. In some species like Blackthorn this produces a tangle of stems which provide great nesting habitat for birds, and young wood for invertebrates, in others like Hazel it will produce many straight rods which can be used in many ways, we use them as stakes for various tasks around the reserve. Before humans large grazing animals would have pushed through wooded areas, breaking stems on their way and accidentally coppicing the area.

Standing deadwood –



A technique to remove a tree without it going anywhere and increase biodiversity whilst it happens! Sometimes trees cause problems, especially when they are dropping seed into areas they aren't supposed to or have grown too close together. By ringing these trees, cutting through the outer layer of bark and living tissue, we can create standing deadwood which is one of the richest habitats for invertebrate life. This would have been done by animals in the landscape such as Beaver and Deer.

Thinning –

Some areas of the reserve have trees that have grown too close together, either because they were planted that way or there was excessive seed in the area. When trees grow closely they head straight up, becoming lollipop trees, tall with a little flurry of leaves on top. Thinning them will encourage growth throughout the entire tree, allowing it space to spread sideways, gaining more shape and strength.

Clear fell –



In early December we will be completing the last phase of a project to remove the hybrid Poplar trees on the west side of Thorpe Lake. These trees were planted as a wind break before Whisby was a nature reserve, they are not native and have grown so big now that they are leaning over the paths and road. Whilst they are not dangerous yet they will become so soon so we will be removing the final 15 trees. Looking at the areas we have already done the results are really encouraging. Where we started four years ago in the north west corner of Thorpe Lake many native species have broken through having been suppressed for many years by the taller Poplar trees, and the felled trunks have disappeared beneath the growing canopy of mixed species much better for our native wildlife.

By felling trees on the reserve we hope to improve areas either for wildlife or for you. We want you to have the best experience possible when you come to our nature reserve and that includes not being hit in the face by wet leaves and twigs! Along the railway line we have been raising the canopy of the Oaks by taking off the lower branches that were getting in the way and coppicing some of the Willows which continually grow into the path. Maybe you'll see us out there next time you visit.

Emily Summerlin
Assistant Warden



Love your Parish



Thorpe on the Hill - a Wildlife Friendly Community (WFC) Making Room for Wildlife

The Eric East Lake

500 ÷ 27th = 45 (Tenby Daffodil Bulb Planting)

As explained in the last issue, the Parish Council generously provided funding for the purchase of bulbs for the northern section of the lake surrounds. We have focused on those that have done well so far and the first lot of bulbs (Tenby daffodils) were planted by a group from the 27th Lincoln Scouts, their leaders and some parents. We planted the 500 bulbs in 45 minutes. It's always a pleasure to see young people being active outdoors and making efforts to improve the environment.



I planted aconites in a similar area a few days later.

This is the what3words reference for one of the areas. [dreamers.crisp.aunts](#)
Look out for the bulbs in the spring. The aconites should appear early.

Connectivity

This is still 'work in progress' . Hopefully, there'll be more to report in the next issue.

Love your Parish – Eric East Lake Working Group

On the Water

On my recent visits to the lake the water has been dominated by 6 swans (sometimes 8) and over 70 Canada geese. When I took these photos the light was magical.



In the Grass

A number of mushrooms (probably shaggy ink caps) have appeared near the walnut tree on the northern boundary. They are edible, but don't try them unless you confirm their identity first. They can also be used to make ink, hence the name.



Grass collecting

Following the final grass cut of the year, a group of 9 volunteers spent the morning of Monday 13th November raking up the cuttings and disposing of them in the wooded areas. This had to be done for two reasons:

The cuttings had formed a thick mat in places and this would inhibit growth if not removed.

Wild flowers favour a nutrient poor soil so the removal of the cuttings prevents them from breaking down and improving soil quality.

We had the benefit of sunny (but breezy) weather as you can see from the photographs. Swan numbers continue to increase with seven adults and four juveniles on the water as we worked.



Some of the volunteers removed the many small saplings which have thrived in some areas. In a wilder environment, many of these saplings would be removed by grazers or browsers but there are few of these at the lake and so human intervention is necessary.

Cans and bottles were also removed from the wood pile. Their presence is very disappointing.



A big thank you to everyone who helped. As I spend more time working at the lake I realise there is a need to have working parties on a regular basis if the lake area is to be managed in the best way for wildlife.

Stop Press

A resident sent me this photograph of a bar headed goose, recently spotted on the lake. They are native to East and South Asia, so this is probably an escapee from a waterfowl collection. They normally live in the high mountains and fly at unusual altitudes.

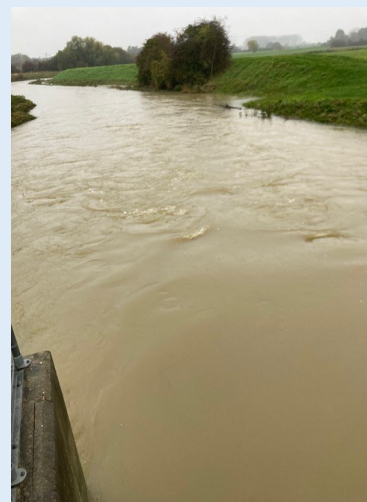


Love your Parish - ThReds Walking Group

ThReds Walk 64 Storm Barbet Route Change (27 November, 2023)

Not a circular route from Aubourn to Bassingham and back

Having enjoyed the clockwise circular route from Aubourn earlier in the year, our planned anticlockwise route was not to be. Storm Barbet left the route impassable in places (see photos) and the decision was made to walk round Whisby Nature Park where we knew the paths would be walkable.



It was remarkably quiet at Whisby given that it was half term.



Fourteen of us went for lunch at the Railway and enjoyed eating in the extended and upgraded marquee.

For more information contact me at tonymagri949@btinternet.com

Love your Parish - ThReds Book Club

Book 55 All the Light We Cannot See



This Pulitzer Prize winning book was chosen by Zoe who also hosted the meeting. The photographs show some of the wonderful, themed refreshments provided but you will need to read the book to understand the significance of peach clafoutis, the sea shells, Breton cider and the model house. We decided to have a team photograph.



As you can see from the smiley faces, we always have a good time. Thank you Zoe.

Summary from the Pulitzer Prize Board

An imaginative and intricate novel inspired by the horrors of World War II and written in short, elegant chapters that explore human nature and the contradictory power of technology.

What came out of our meeting?

This novel divided opinion. For some, it was up there with the very best books ever read - top ten, even top three were mentioned. The majority gave it 9/10. For others, it was too upsetting, perhaps unnecessarily so, and for one it was formulaic and predictable. It certainly contains some of the most harrowing and upsetting passages that I've read and thoughts of those sections linger long in the memory.

Comments from the group.

- All agreed that the book was very well written with a structure that keeps two stories in parallel until, inevitably, they converge.
- "I was gripped immediately by this brilliant writer"
- "I wouldn't/couldn't read it again"
- "I have read the book three times"
- "The sense of touch for Marie-Laure (She is blind) and the sense of sound for Werner (He was a radio expert from a young age) were well described."
- "Descriptions made clever use of the senses off smell, touch and hearing"
- "I'm interested in the period and was drawn along by the narrative"
- "Gripping"
- "Well written but unconvincing"

SCORE 8.5/10

Inevitably, the novel generated emotional conversation about our parents' roles in the war and the discussion part of the meeting lasted much longer than normal.

Our next book is "Dandelion Soup" by Babs Horton, chosen by Jenny and Lawrie.

For more information contact me at tonymagri949@btinternet.com

AUTUMN IN TUNMAN WOOD



Season's Greetings from The Railway Inn, Thorpe on the Hill

The Railway Inn Christmas Menu

STARTERS

Dipping Brie served with Crusty Bread (V)
Prawn Cocktail served with Brown Bread
Soup of the Day served with Warm Crusty Bread

MAINS

Roast Turkey

served with all the trimmings including
Pigs in Blankets, Creamy Mash, Roast Potatoes, Roast Parsnips,
Seasonal Vegetables, Stuffing and Gravy

Pan Fried Sea Bass

served with Sweet Potato Fries and a Tomato and Herb Cream Sauce

Vegetarian Tartlet (V)

served with New Potatoes and Seasonal Vegetables

DESSERTS

Christmas Pudding served with Brandy Sauce
Salted Caramel Cheesecake served with Cream or Ice Cream
Chocolate and Caramel Profiteroles served with Ice Cream

1 Course : £19.50

2 Courses : £26.95

3 Courses : £29.95

£10 per head Deposit Required on Booking
Available Lunchtimes and Evenings from 1st December
(excl Monday, Tuesday and Sunday)

Tel: 01522 681499

***Dave and Mike would like to take this opportunity to
thank you all for your support during 2023.***



Halfway
Heroes
M.C.C.

Join us for our

CHRISTMAS TOY RUN



Sunday 10th December



MEETING AT
THE RAILWAY INN, STATION
ROAD THORPE-ON-THE-HILL,
LN6 9BS

FROM 9AM: COMPLIMENTARY
TEA AND COFFEE KINDLY
PROVIDED BY THE PUB.

BACON BUTTIES AVAILABLE.
LEAVE: 10AM

Lincoln County Hospital
Rainforest Ward

£5 PER BIKE DONATED TO THE
HOSPITAL ON ARRIVAL.
FEEL FREE TO BRING
COLOURING/STICKER BOOKS
FOR
THE CHILDREN.



Donations of
colouring/sticker
books can be
dropped at
The Railway Inn



The Railway Inn, Thorpe on the Hill

CHRISTMAS

Raffle Draw

Sun 24th Dec @ 9PM

£1 per square



Don't Forget New Year's Eve Disco
and Karaoke 8pm @ The Railway Inn



UPSHALL'S CHRISTMAS

LUNCH

DECEMBER

TUESDAY

12

AT 12:30PM

THE CYGNET SUITE, WHISBY
NATURE RESERVE

WE HAD A LOVELY RESPONSE TO OUR INVITATION AND LOOK
FORWARD TO SEEING YOU THERE.
IF YOU HAVE ANY QUESTIONS OR QUERIES, PLEASE CONTACT THE
PARISH CLERK AT
TOTHPARISH@GMAIL.COM
OR POP A NOTE THROUGH THE DOOR OF THE VILLAGE HALL



St Michael's Church of England Primary School

St Michael's Church of England Primary School, Thorpe on the Hill

Lots to celebrate at St Michael's!

We are thrilled to announce that following our most recent OFSTED inspection at the end of term in July, we continue to be a GOOD school.

The report really doesn't do the inspection/inspector justice as it has to be written quite simply. However, the inspector praised the following as real strengths in his conversations with us:

- reading especially our Phonics teaching by the staff as well as the love for reading across school;
- all staff and the impact they make to children in school;
- the strength of the leadership team in driving the school forward;
- SEND - inclusivity of all children and what is in place to ensure everyone is valued;
- our curriculum including our bespoke St Michael's curriculum and the impact of this on the children; it is unique and needs to be treasured;
- safeguarding;
- the strength of the values and vision in developing the whole child.

Top quotes from the report include:

"Caring adults nurture pupils . Staff take the time to know the pupils well. They understand pupils' individual needs and know how to support them."

"Pupils behave well. They are kind to each other."

"Pupils know staff will help them if they have worries. Bullying is rare."

"There is a thriving sense of community where older pupils play alongside the younger ones."

"Leaders have high academic expectations for pupils."

The inspector also said as he left...St Michael's is a very special place and we must remember

that! We will treasure that last quote because our school truly is a special place. I would like to thank the staff for their continued hard work and determination for children to be the best that they can be.

A second celebration is that we have been awarded with the Primary Science Quality Mark for our commitment to science and the impact this has on our teaching and learning.

This was the summary:

"An enjoyable submission to review. Well done on all of your hard work across this process, it is clear that you have not only identified a range of actions throughout the process, but that you have been passionate about your journey. You should be very proud of the impact you have had on your school community, a fantastic job!"

A huge well done to Mrs Clifton, who leads on Science, for all of her hard work in this process!

Well done to everyone at St Michael's...what a great start to term!

It will be getting to that time of year again when prospective Reception parents need to begin to look for the September 2024 intake and we would love to welcome you to our school. Our Reception class have at least three fulltime adults, an enclosed large covered outside space and there is access to Breakfast Club every day from 7.30am and after-school care until 5.30pm – all of our children love Breakfast and After-School Club!

We hope that prospective parents can see what we are all about at St Michael's and we welcome you to have a look around. Please contact school on 01522 681923 or enquiries@stmichaels.lincs.sch.uk and we will be happy to help you. We have spaces in some year groups, so why not get in touch and come and see what makes St Michael's such a special place to grow and learn!

St Michael's Church of England Primary School



St Michael's Church of England Primary School



COULD YOU BE A SCHOOL GOVERNOR?

St Michael's Church of England Primary School is looking for governors. Are you interested in supporting our school? Are you able to attend a meeting once a term with other, like-minded people who care about our school? If so, why not apply to become a school governor. School Governors support the school's leadership team to make improvements and ensure we are operating in the best way possible. Make a change, become a school governor and support our school. For more information please get in contact with school via enquiries@stmichaels.lincs.sch.uk or 01522 689123

SUNDAY 10TH DECEMBER 2023 4PM

CHRISTMAS *Carol Concert*

*St Michael & All Angels, Thorpe on the Hill
Followed by mulled wine & mince pies*



Come along to sing your favourite carols, with Christingles provided by St Michaels Primary School. We will be collecting toys for the Salvation Army Christmas Present Appeal.



Village Carol Singing- Tuesday 19th December from 5.30pm

Carols around the Christmas Tree - Christmas Eve 10.30am

Christmas Eve Service 9pm

St Michael and all Angels



Hello.

As I sit to write these notes it is just before Remembrance Day, but I am focusing on December and Christmas, where has 2023 gone!

Once all the commercial side of Christmas eases it has always been one of my favourite times of the year. Spending time with the family, plenty of football and wonderful church services. Services ranging from our various Carols and Mince Pie services, through to the joy of Midnight Mass.

Christmas, however, is important because it reminds us that in the person of Jesus, God affirmed our humanity. It was a clear message that our physical nature wasn't worthless, but precious, and by that the whole of the created order reveals something of God. Over the last few months our Church Councils have been reflecting on the changing nature of how we experience humanity, and that as village churches we have to be welcoming to EVERYONE, not just those who mirror our life experiences, but every sort of life experience. Our aim is to welcome learn and evolve as we meet new friends who experience their humanity in other ways to existing congregations. We have tried to express that in the following words, which we hope others will help us grow through.

All ARE Welcome

Our Responsibility as village churches is to be welcoming and as safe as possible for all people. In responding to that call to hospitality we recognise that some peoples' experience of life is different and varied to our current congregations. In being welcoming and as safe as can be, we want all to flourish for who they are. In doing that we will make mistakes, but want to listen and learn in open, non judgemental ways.

We do not have all the certain answers, we have a faith that calls us to love, recognising we are all on a journey, not confined by hard barriers. No one is an outsider, we are all on that journey, we will welcome you to exercise your gifts for who you are, not whether you re-enforce any existing group characteristics.

Please help us live and develop that welcome.

As ever

Andrew

St Michael and all Angels

Our Church Wardens

Felicity Jenkinson on 07949654855 and Bob Sheldon on 685810

Our Treasurer

Chris Abrahams on 698208

We are now pleased to say that all administration for Baptisms, Weddings and Funerals is being dealt with at North Hykeham.

Please contact:

Sally Long, Parish Office (Monday to Friday 9am - 12pm)

North Hykeham, Lincoln. LN69AB Tel: 883100

Tel: 883100 or email: sallylong@nhallsaints.co.uk

Bell Practice

Tues Evening Bell ringing lessons 7.30pm - 9pm

Please contact: Sandra Underwood on 07710 762458

St Michael and All Angels Services and events, December and January

Sunday 3rd December 11am Morning Prayer

Sunday 10th December 4pm Candlelight Carol Service with Salvation Army Christmas Present Appeal Collection followed by festive refreshments.

Sunday 17th December 9.30am Holy Communion

Village Carol Singing Tuesday 19th December Meeting at Church at 5.30pm

Wednesday 20th December 2.30pm Festive Afternoon Tea

Christmas Eve 10.30am Carols around the Christmas Tree. Christmas Communion 9pm

January 2024

07/01/24 11am Morning Prayer

14/01/24 4pm Evening Prayer

17/01/24 2.30pm Afternoon tea

21/01/24 9.30am Holy Communion

Plus a major thankyou to village members that gave the church a good clean prior to the upcoming festive services!!



We look forward to welcoming you to any of these services irrespective of which village you live in.

Thorpe on the Hill - Parish Council

Thorpe on the Hill Parish Council

Parish Councillors

Cllr Bindley (Chair)

Cllr Bramford (Vice chair)

Cllr Ives

Cllr Sheldon MBE

Cllr Williams

Cllr Owen

Cllr Lyons

Parish Clerk: Kerrie Vickers

Parish Council email: tothparish@gmail.com

Parish Council website: www.thorpe-hill.parish.lincolnshire.gov.uk

– Portfolio holders

Whisby Quarry Liaison meeting - Cllr Lyons and Vacancy

Whisby Nature Park Steering Board – Cllr Sheldon MBE

Finance - Cllr Bramford

Allotments - Cllr Lyons

Tennis Court – TBA

Staffing Committee - Cllrs Lyons, Bindley and Vacancy

Lake Management Committee—Cllrs Lyons, Sheldon MBE, Bindley and Vacancy

Parish Council Meetings

All Parish Council meetings will be held at the Oliver Roper Parish Centre commencing at 7pm. The dates are advertised on the notice board and via the Parish email circulation list. If you are not on the list please email the Parish Clerk and request to be added. You can ask for your email to be removed at any time.

Local Police and District and County Councillors are also invited to attend. The agenda and minutes of the current meeting are available on the Parish Council website and, on request, from the Parish Clerk.

The Parish Council welcomes members of the public to ask questions or make short statements to the Council during public time at the start of the meeting.

North Kesteven District Councillors and County Councillor

NKDC, Mitch Elliott email: cldr_mitch_elliott@n-kesteven.gov.uk

NKDC, Peter Overton email: cldr_peter_overton@n_kesteven.gov.uk

LCC, Alan William Briggs email: cllra.briggs@lincolnshire.gov.uk

Oliver Roper Recreation Tennis Court

If you would like to use the Tennis Court please contact the Parish Clerk,

email: tothparish@gmail.com

A £10 deposit for the key is refundable. Please note the court can only be used for tennis, not other ball games.

Thorpe on the Hill - Parish Council

PARISH COUNCIL MEETING 18th OCTOBER 2023

A member of the public thanked the Parish Council on behalf of the residents and Councillor Bindley in particular, for the work and time which has been dedicated to the Fosse Green Energy consultation.

A member of the public asked about opposition plans to the solar farm moving forward. Councillor Bindley advised that no fixed action group had been developed as yet but a group is starting to form. It was hoped that a public meeting will be held early in the New Year with the aim to develop a group independent of the Parish Council, with the hope to pull on local expertise.

District/County Council Updates County Councillor Allan Briggs advised the meeting that he has attended several of the consultations regarding the Fosse Green Energy proposal and had noted that the feeling to the proposal is very much opposed. District Councillor Peter Overton also commented on the solar farm project and advised the Parish Council to be more specific with the consultation responses and to focus on direct issues relating to Thorpe on the Hill instead of the broader picture and that local knowledge is key. He also advised the meeting that the policies and plans set out by North Kesteven District Council in active response to climate change have been re-affirmed.

Possible extension to ORPMR, application for planning permission submitted with a determination date of 21 November 2023. It was agreed that a group of councillors would interview a short list of builders with the parish clerk.

Refurbishment of circular seat on village green, bench has been restored.

Fencing between 2 Westfield Drive and ORPMR play area, it was agreed that the PC would take responsibility to demolish and remove the existing fence. This will be done in agreement with the resident at a mutually agreed time.

Bowls Club Current position, good progress has been made and most of the points agreed. It is hoped that the license agreement will be brought to the December PC meeting for review and approval. It was agreed to delegate the task of agreeing a quote for pavilion repairs to Councillor Lyons and the Parish Clerk.

Little Miss Muffet play equipment Current position A minor design fault has been identified. Actions Clerk in contact with supplier.

Playpark annual inspection. Current position, minor actions to be taken following annual inspection regarding generally cleaning will be actioned in the Spring. Swing has been adjusted. Rocking horse surface has been jet washed.

Wildlife Friendly Community Status. It was agreed that a member of the wildlife group could contact Eagle and Swinethorpe and Donnington and Whisby Parish Councils on behalf of the Parish

Fosse Green Energy. It was agreed to submit the response to the non-statutory consultation prepared by Councillor Bindley.

Allotment Working Group. It was agreed to form an allotment working group to include an allotment tenant from each of the 2 sites.

Scout Groups Hall Access. It was agreed that one nominated person from the Scout groups will be given the codes for the key safe and alarm system and notified when the codes are amended to allow freer access to the hall for scout session leaders, for a trial period of 6 months.



Seasons Greetings



from the
NATURAL WORLD CENTRE

OPEN DAILY

9:30am - 4:30pm

Monday 18th December - Saturday 23rd December

9:30am-4:00pm

Christmas Eve and Christmas Day

CLOSED

Tuesday 26th December - Saturday 29th December

9:30am - 4:00pm

Sunday 31st December

9:30am - 3:00pm

Monday 1st January

9:30am - 4:00pm

Normal opening times return 2nd January 2024.

**Reduced brunch menu will run between 18th
December 2023 to 1st January 2024.**

Food will be served until one hour prior to closing.



www.naturalworldcentre.org



CD ELECTRIC



Domestic & Commercial Electricians



General Electrical Installation



New Builds, Re-Wires & Consumer Unit Upgrades



Testing & Inspection EICR's



Fault Finding & Maintenance



Solar PV, Battery & EV Charger Installation



CCTV Installation

Family Run Business Based in North Scarle - Covering Lincolnshire & Nottinghamshire
Local & Reliable Electricians

CONTACT DETAILS



07971452978



@cdelectric.uk



CDElectric.UK



cdelectric@btconnect.com



<https://tradehq.co.uk/cdelectric>

The Railway Inn

Station Road, Thorpe on the Hill, Lincoln, LN6 9BS



BAR HOURS:

Mon and Tues 3pm - 11pm

Wed to Sat 12pm - 11pm

Sunday 12pm - 10.30pm

RESTAURANT HOURS:

Mon and Tues - closed

Wed to Sat 12pm - 2pm

6pm - 8.30pm

Sunday (carvery only) 12pm - 3pm

REAL ALES & RESTAURANT
CAMPING & EN-SUITE ACCOMMODATION

for all queries and reservations call: 01522 681499



ACCEPTING NEW PATIENTS

At Collingham Dental Practice we are privileged to have an outstanding dental team which we are very proud of. Our excellent dentists are supported by a dedicated team of hygienists, nurses and receptionists who are all here to help you. All our team members are constantly striving to further their knowledge and skills to offer you the most up to date techniques and materials.

Treatments include:

- Teeth Whitening
- Teeth Straightening
- Dental Implants
- Hygiene Services
- Tooth Coloured fillings
- Veneers
- Cosmetic Crowns & Bridges
- Dentures



For more information Tel: 01636 893477

What time is the next bus to Lincoln?



What bin is it this week?

How do I report a pothole?

**Find the answers by Googling:
Thorpe on the Hill
Parish Council**

Scouts



27th Lincoln
Thorpe-on-the-Hill

Meet weekly in Thorpe-on-the-hill

Cubs meet on a Tuesday
Beaver & Scouts on a Thursday
All 3 sections are full and we are
in urgent need of adult
volunteers.

If you could spare an evening
once a week during term time and
would like to know more please
contact

Fran Firth 07952 480708

Established for over 40 years

Funded places available

Rated 'GOOD' by Ofstead

Fees: £14 per session

We offer a safe, stimulating and
caring environment where your
children can learn and play
together.

Contact Stacey on 01522 694049
thorpe.playgroup@googlemail.com
www.thorpeonthehillplaygroup.co.uk



Vimartech

ELECTRICAL CONTRACTORS



A FRIENDLY LOCAL BUSINESS COVERING ALL TYPES OF ELECTRICAL INSTALLATION INCLUDING:

DOMESTIC
COMMERCIAL
INDUSTRIAL
AIR CONDITIONING
AUTOMATED GATES
CONTROL SYSTEMS
RE-WIRES & UPGRADES

AGRICULTURAL
PROCESS CONTROL
INSPECTION & TESTING
PANEL BUILDING
MOTOR CONTROL
CCTV, ALARMS & LIGHTING
CONDITION REPORTS

CONTACT US ON
TELEPHONE:
01522 778733
MOBILE:
07976 952691
OR FIND OUT MORE AT
WWW.VIMARTECH.CO.UK

FREE ADVICE & QUOTATIONS

ALL WORK TO BS 7671 IET 18TH EDITION WIRING REGULATIONS

Vimartech

TRAINING LIMITED

CONTACT US ON

T: 01522 253250

E: INFO@VIMARTECHTRAINING.CO.UK

OR FIND OUT MORE AT

WANT TO BECOME AN ELECTRICIAN OR UPDATE YOUR SKILLS

WWW.VIMARTECHTRAINING.CO.UK

TRAIN WITH US!

A TRAINING CENTRE SPECIALISING IN ELECTRICAL COURSES

FIND US ON
FACEBOOK



DIPLOMA IN ELECTRICAL INSTALLATION LEVEL 2 & 3 | NVQ DIPLOMA IN ELECTRICAL INSTALLATION
18TH EDITION WIRING REGULATIONS | INITIAL & PERIODIC, INSPECTION & TESTING
PORTABLE APPLIANCE TESTING (PAT) | ELECTRICAL DESIGN (JIB TECHNICIAN GRADE)
ELECTRIC VEHICLE CHARGING POINT INSTALLATION COURSE | PLC COURSE

WE ALSO OFFER BESPOKE COURSES INCLUDING:

ELECTRICAL EQUIPMENT & MOTOR CONTROL WIRING
BASIC ELECTRICAL & SAFE ISOLATION (FOR MAINTENANCE ENGINEERS)



Contact Chris at:

chrismartinuk@supanet.com
Mobile 07850 418744

CHRIS MARTIN
Painter & Decorator
Builder

Specialising in all aspects of work to properties, including Kitchen & Bathroom Fitting, Tiling, Joinery, Plastering and much more.

No job too small, so call now for a free quote & friendly advice

Home Improvements

Property Repairs



Ian Sheldon Plumbing Services

Oil Fired Boiler
Installation, Maintenance & Repairs

07970 064703

imsheldon36@hotmail.co.uk



Registered
Technician

Boiler Installation/Repair
Full Bathroom Installation
General Plumbing Maintenance

View from the Hill Business Advertising

Rates

Full Page
£84 per year
Half Page
£48 per year
Quarter Page
£33 per year
One Off Half Page
£15 per advert
One off Full Page
£25 per advert

For more details
Please contact
Chris Abrahams

01522 698208

chris.abrahams@btinternet.com

Useful Telephone No's

Richmond Medical Centre
01522 500240

Newark Rd Surgery
01522 537944

Bassingham Surgery
01522 788250

Bassingham Pharmacy
01522 789307

NHS Dental Helpline
01522 515386

Lincoln County Hospital
01522 512512

NSPCC Helpline
0800 800 5000

NKDC Environmental Health
01522 699699

Oliver Roper Hall Hire

The Oliver Roper Parish Meeting Room
is available to hire during the day or
evenings.

Availability can be seen on the Parish
Council website.

Hire fees

Village Groups and Registered Charities.
£8 per hour.

Village Residents £10 per hour.

All Others £13 per hour.

There is a £5 surcharge for bookings
continuing after 10pm.

Please contact:
orpmbookings@gmail.com

Mobile Library

Mobile library Visits to Thorpe are on
the following Thursdays.

21st December

18th January

25th February

From 10.30 to 11.00
In Lincoln Lane

COMPUTER SOS

"WE COME TO YOU!"

All types of Computers supplied & repaired



- Crashed / Slow Computer
- Virus Removal
- Internet Problems / Setup
- Indoor/Outdoor Wifi Specialist
- All Types of Laptop Repair
- New & Used Laptop Sales

 **APPLE Computer Going slow?** 



Did You Know ?
We provide a free Laptop/PC upgrade review to make it faster than new**

LOCAL - RELIABLE - COMPETITIVE

01522 640652

07894 352 517

www.compsos.co.uk

If you're serious about gaming visit
www.gamingpcshop.co.uk

Love your Parish Craft and Natter

The group meet once per month in the Oliver Roper Centre, 7pm until 9pm. Your first meeting is free, and then after that a small subscription of £2, to cover hall rental.

Next meeting dates:

October 30th

November 27th

December 18th



BUS TIMETABLE *Monday to Saturday* THORPE on the HILL to LINCOLN

SERVICE 49

Lincoln to Bassingham

6.00 pm from Lincoln Bus Station: 6.03 Debenhams:
Arrives TOTH 6.30pm

Bus Time Table SERVICE 48

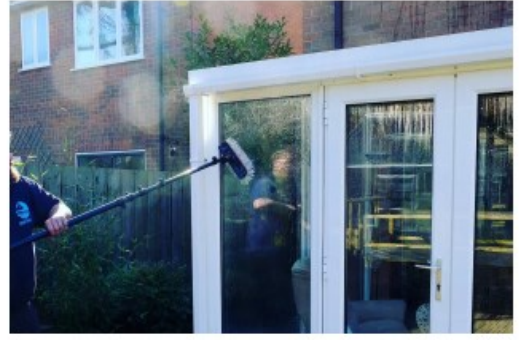
Lincoln Bus St	6.40	9.00	11.00	13.00	15.00	17.00
Asda	6.52	9.20	11.20	13.20	15.20	17.20
N. Hyk Xroads	6.55	9.22	11.22	13.22	15.22	17.22
Pennells	6.58	9.25	11.25	13.25	15.25	17.25
Thorpe	7.02	9.30	11.30	13.30	15.30	17.30

Thorpe	7.50	10.15	12.15	14.15	16.15	18.15
Pennells	7.57	10.19	12.19	14.19	16.19	18.19
N. Hyk Xroads	8.00	10.22	12.22	14.22	16.22	18.22
Asda	8.03	10.25	12.25	14.25	16.25	18.25
Lincoln Bus St	8.35	10.50	12.50	14.50	16.50	18.50



- Window Cleaning
- Internal Window Cleaning
- Gutter Clearing
- Fascias & Soffits Cleaning
- Pressure Washing
- Sign cleaning
- Gutter repairs

**GET A FREE QUOTE FOR
YOUR HOME OR BUSINESS**



Tel: 07720 770958

www.bensavagewindowcleaning.co.uk

enquiries@bensavagewindowcleaning.co.uk



FEATHERS GARAGE & VEHICLE RENTAL

Motor Engineers

Thorpe on the Hill, Lincoln, LN6 9BE

01522 681467

Email: feathersgarage@hotmail.com

Work Guaranteed

Collection & delivery service usually available.

Petrol & Diesel cars & light commercials

Mechanical & Electrical repairs, tyres, clutches, exhausts etc

Crypton computerised engine tuning and Diagnostic Analysis

Now offering Lincolns ONLY

fuel diagnostic, cleaning and repairing service

Vehicle Rental Service now available

Cars, Vans & Mini Bus Hire: Short and Long Term Hire available

Competitive Prices - Call or email Tony for a quote!

Email: tonyfeather@feathersvehiclerental.co.uk

Croft Carpets

CARPETS • FLOORING

CURTAINS & BLINDS

Move furniture

Uplift and dispose of existing flooring

We will beat any like for like quote

CROFT CARPETS
CURTAINS & BLINDS LTD

THE PELHAM CENTRE, CANWICK ROAD, LINCOLN LN5 8HA

01522 523004 croftcarpets.co.uk

Croft Carpets

ABSOLUTE INTERIORS



**Curtains, Roman Blinds,
Pellets, Swags & Tails,
Tie-backs and loose covers**

**Expert design advice
With 25 years experience.**

Free quotation-no obligation.

*Clients can provide fabrics or
choose from my extensive range*

NATASHA TOULSON

Tel: 01522 810710

Or mobile: 07941 830420

Gary Taylor

N.D.A.

All aspects of tree
and hedge work
undertaken

- * NPTC Qualified
- * Fully Insured
- * Domestic and Commercial

24 Fosse Lane
Thorpe on the Hill
Lincoln
LN6 9BE



**Taylor
Tree Services**

Mobile: 07845 720099

Tel: 01522 685690

Email

Gary.taylor.10@gmail.com

TECH CLASS

**Technical Support
Consultancy**

Do You Need Tech Help?

**Need help making sense of your PC
or Mac, Laptop, Tablet or Mobile?**

**Having issues with your Internet,
Email, Software or Hardware?**

**We offer support for all kinds of
technology!**

**Professional and Friendly - Tuition,
Support and Guidance.**

Appointments at your home.

**James McCarter 07783 231196
contact@techclass.co.uk
www.techclass.co.uk**



**SING,
DANCE
ACT**

Come and join in the fun!

Ages 3-15. Saturdays 10-12.30pm

at Swinderby Village Hall

**Musical Theatre classes taught by friendly
qualified teachers.**

BALLET TAP JAZZ

**Classes on Tuesdays from 4pm
at Swinderby Village Hall**

**For more information please call:
Danielle - 01522 696100**

Please visit: www.dancelincoln.co.uk

**Branches in Swinderby, Wellingore,
Coddington, Nettleham, Welton,
Skellingthorpe and Sturton.**

**Principal: Mrs D. I Ward F.I.D.T.A. A.I.S.T.D.
41 Grandifield Way, Nth Hykeham,
Lincoln LN6 9NZ**

Tel: 01522 696100 or 791898

